



16-HYB-2729



ABOUT US

Due to unconscious use, our water resources are gradually decreasing and the water quality we consume is decreasing every day. Our company is conscious and responsible not to deprive future generations of "this indispensable but limited resource that nature offers us".

To our valued customers with this sensitivity,

Sebeke Waters

- * Natural Spring Waters

- * Use Water

- * Swimming – Ornamental Pool Waters

- * Waste Water

reliable, trouble-free, timely and precise in all kinds of treatment and recovery works required for it serves with the aim and competence of producing solutions.

Our Products :

- * Fully Automatic Water Softening Devices

- * Swimming Pool Chemicals

- * Fully Automatic Sediment – Activated Carbon filters

- * Water Chemicals

- * Reverse Osmosis Devices

- * Ultraviolet Devices

- * Dosing Pumps

- * Automatic Testing Instruments

- * Fully Automatic Deionizing Systems

- * Ornamental Pool Fountains

- * Hausing–Cartridge filter and Spare Parts

- * Pool Heating Systems

- * Lyon Modifier Resins

- * PVC–PPRC Pipes and Fittings

- * Automation Systems

- * Pool Cleaning Equipment

- * Sauna and Jacuzzi Systems

- * * WasteWater Treatment Plants

SOFTENING SYSTEM;



Hardness caused by calcium and magnesium ions in water is reduced by using cationic resin with sodium salts of these ions that do not calcify and precipitate

it is the process of being removed from the water by changing it.

By preventing scale accumulation in steam boilers and hot water installations, heat transfer losses and energy losses are minimized. Aquacell water softening systems protect installation and heat treatment devices from calcification, reducing the usage time and repair costs of devices.

The system consists of fully automatic control valve epoxy coated polyethylene body, quartz sand and ion exchange resins.

ACTIVE CARBON SYSTEM;

Activated Carbon Filters are used for the treatment of unwanted chlorine, color, taste, odor-giving molten gases, residual and organic substances in water. Activated carbon is a carbonaceous material with a very large surface area (1000-1500 m²/g). The efficiency of activated carbon filters is determined by the properties of the activated carbon used in the filter bed and the correct selection of the filtration rate of the water.

In activated carbon systems, the adsorption mechanism also operates in addition to the filtration mechanism during the purification of water. For this reason, Activated Carbon Filters are systems that perform physicochemical purification. Activated Carbon filters operate fully automatically without the need for human power. Activated Carbon Filters that perform automatic backwashing for 15-20 minutes a day in this way he renews himself.



MULTIMEDIA FILTERS;

Multi Media filters are used to remove suspended solids, turbidity and other particles contained in water. The system consists of placing more than one layer inside the body, the degrees of granulometry of which are different.

Multimedia filters, in addition to separating solids from water, a second task is to protect the equipment that will be positioned after it. Since the load that will go to other purification filters will be minimized in a well-filtered system, the service life of the equipment will be extended and its efficiency will be increased.

ULTRAVIOLE SYSTEMS;



Disinfection with Ultraviolet Systems is the process of neutralizing microorganisms without adding any chemicals or oxidants to the water. Thanks to the ultraviolet lamp placed in a tube-like glass case, a dosage-adjusted UV RAY is given to the water entering the device. These ultraviolet rays disrupt the DNA structure of microorganisms and make them ineffective. In this way, an average disinfection efficiency of 99% is achieved.

In order for microorganisms to be killed with this system, the ultraviolet work must be hit directly on them. For this reason, before the water enters the Ultraviolet system, the parameters such as sediment and turbidity contained in it must be removed from the water. For this, the ultraviolet is preceded by a sand filter or cartridge it is recommended to use filters.

Another issue to be considered in Ultraviolet Systems is that the final use of the system is possible it is placed as close as possible to the nearest place.

Advantages of Ultraviolet Systems:

- * Simple to implement.
- High ability of disinfection.
- It does not form by-products and residual substances in water.
- Does not affect the taste of water.
- There is no corrosive substance formation.
- * It is economical.





SEPARATOR FILTERS;

Separator Filter systems work according to the principle of removing solids and particles with a specific gravity greater than water from the water by the action of centrifugal force. Due to the power plant effect that occurs when water enters the inlet chamber tangentially, particles heavier than water are thrown towards the device walls and spiral movements they descend towards the collection zone. The particles collected in the lower chamber of the filter are discharged manually or automatically periodically or continuously. The water separated from the particles is drawn upwards through the vortex in the middle of the separator.

- * Separator Filters can work for 24 hours without interruption.
- * holds all particles up to 70 microns.
- * It can work in high capacity.
- It has the feature of self-cleaning automatically.
- There is no need to cut off the water during cleaning.
- Does not require spare parts, there are no moving parts in it.
- * Maintenance consists only of cleaning the container in which solids are collected.
- * The pressure pattern is constant, there is no change in flow even at high capacities.
- There is no risk of clogging as there is no filter element in it.

BAG FILTERS;

Bag Filter Systems consist of a filter body and a bag filter. The filter body acts as a slot for the bag filter, which is the main element that will purify the water. Filter housings are made of stainless steel or carbon steel materials. With the flow of liquid from the inside to the outside, particles and impurities are removed from the bag filter it stays inside. The bag filter can be washed when it is dirty.



INDUSTRIAL REVERSE OSMOSIS;

The feature of these systems is the membrane with specially manufactured melocules-sized pores; it purifies the elements, compounds, bacteria and microorganisms in the water by 95% and ensures the naturalization of the water. Industrial type reverse osmosis systems are widely used in laboratories, hospitals, dialysis centers, cosmetic industry and textile industry to obtain very high quality water.

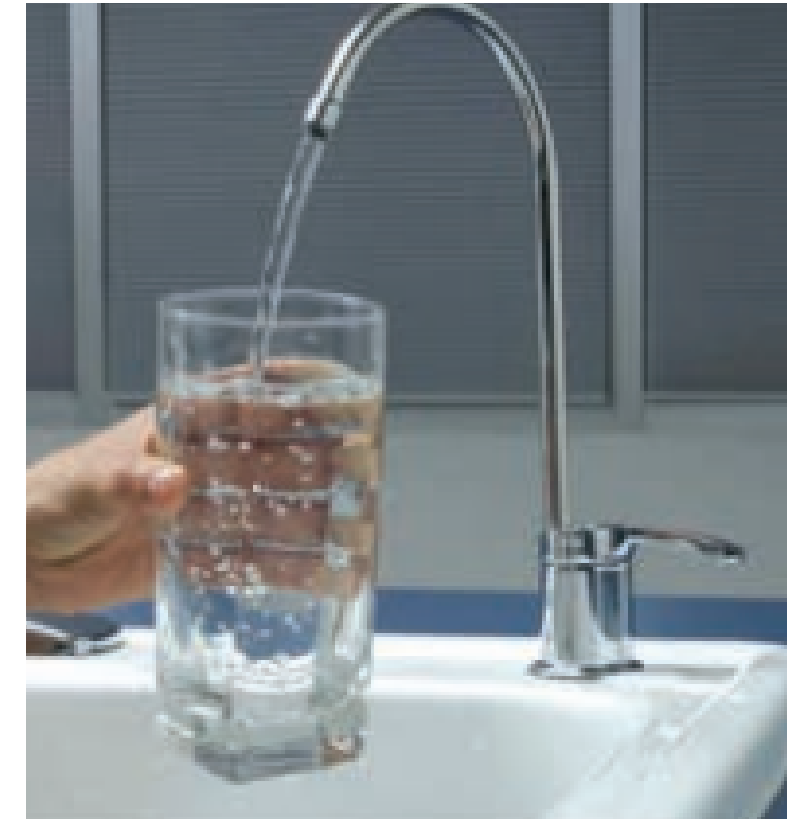


MODEL	KAPASİTE (m ³ /gün)	VERİM (%)	MEMBRAN		MEMBRAN KILIF ADETİ
			ADET	BOYUT	
MFRO 125-1	0,72	40	1	2,5"x21"	1
MFRO 125-2	1,5	40	1	2,5"x40"	1
MFRO 125-3	2	40	1	4"x21"	1
MFRO 140	5	50	1	4"x40"	1
MFRO 240	10	50	2	4"x40"	2
MFRO 340	15	60	3	4"x40"	3
MFRO 440	20	60	4	4"x40"	4
MFRO 540	25	60	5	4"x40"	5
MFRO 640	30	60	6	4"x40"	6

DOMESTIC REVERSE OSMOSIS SYSTEMS

Domestic reverse osmosis systems are designed fully automatically and all accessories of the system comply with food norms. In order for the system to operate fully automatically under all conditions, The necessary solenoid valves and sensors are installed in the system in the most appropriate way. All these features add excellent user comfort to the system and provide great advantages to the user.

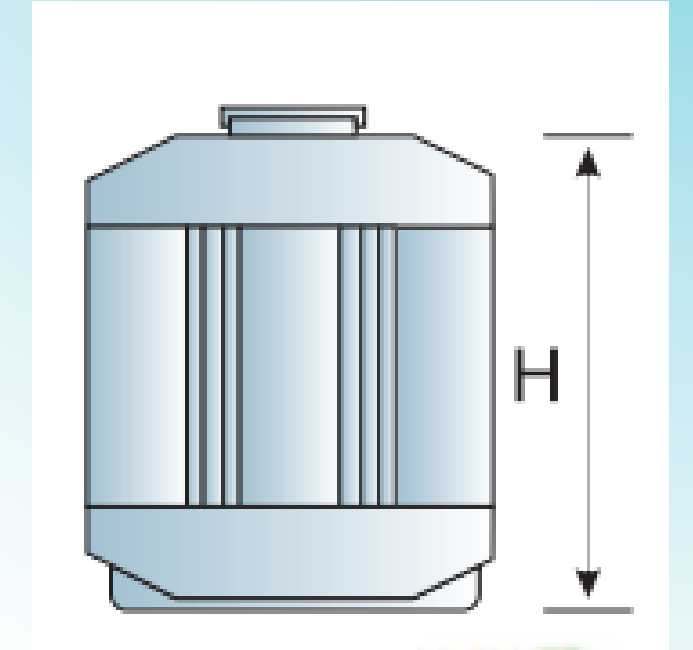
- * Aesthetic design
- * Practical use
- * Quality Drinking Water
- * Ease of Installation and Maintenance
- * Under-the-counter and over-the-counter mounting options



PACKAGE WASTEWATER TREATMENT;

Biological package domestic wastewater treatment systems are systems in which aeration and precipitation are carried out in the same reactor. The package system consists of grill, blower, ventilation line, dosing pump and submersible pumps.

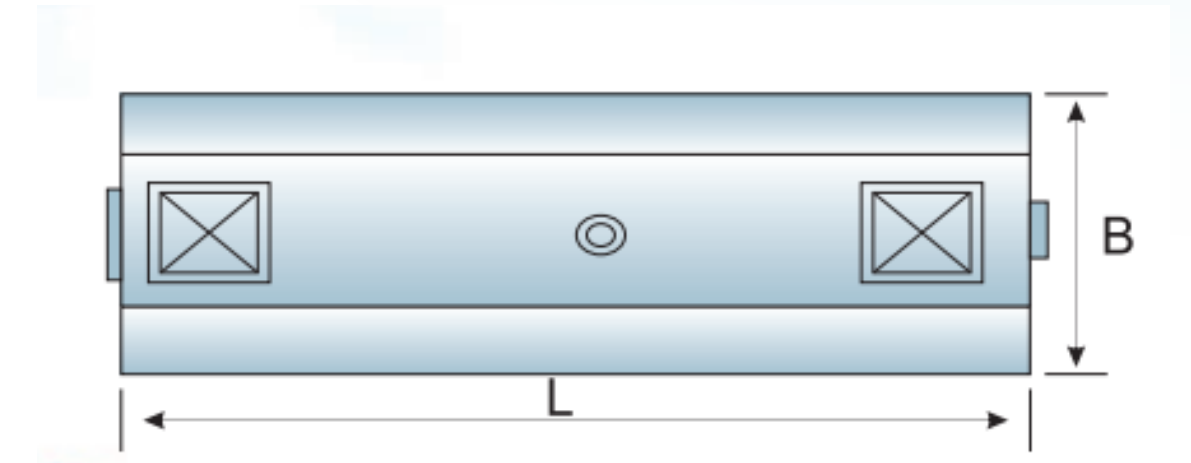
- these are the systems applied for domestic settlements of 25 - 1000 people.
- * The purified water coming out of the system can be used for garden irrigation with filtration systems.
- * The treated water is discharged to the receiving environment in accordance with the Water Pollution and Control Regulations.



BİYOLOJİK PAKET ATIK SU ARITMA ÖZELLİK TABLOSU

Tıp	Nüfus Eşdeğeri (Kişi)	Atık su Debisi m ³ / gün	Paket Ünite Boyaları			Dengeleme Haz. Boyaları		
			B (cm)	L (cm)	H (cm)	B (cm)	L (cm)	H (cm)
MF-PAK- 25	25	5	120	200	200	100	120	250
MF-PAK- 50	50	10	150	300	260	120	120	250
MF-PAK- 100	100	20	180	400	260	165	150	250
MF-PAK- 150	150	30	180	500	260	215	200	250
MF-PAK- 200	200	40	180	600	260	250	250	250
MF-PAK- 300	300	60	220	700	280	250	250	300
MF-PAK- 400	400	80	220	850	280	250	300	300
MF-PAK- 500	500	100	220	1000	280	300	300	300
MF-PAK- 600	600	120	220	1150	280	350	250	300
MF-PAK- 700	700	140	220	1200	280	400	400	300
MF-PAK- 800	800	160	220	1300	280	400	400	300
MF-PAK- 1000	1000	200	240	1300	280	450	450	350

Not: 1000 kişinin üzerindeki kapasiteler için firmamıza başvurunuz. Atık su debisi kişi başına 200 lt. / gün olarak hesaplanmıştır.



INDUSTRIAL WASTEWATER TREATMENT

Industrial wastewater discharges, which directly affect the quality of the natural environment, are one of the problems related to environmental pollution brought about by industrialization and development in parallel. Due to the reasons arising from the differences in the production issues of industrial facilities, wastewater varies in its characteristics and treatability properties.

Mefa Treatment, which works with every industry that has a problem with wastewater, discharges to organizations to help meet the criteria of industrial specific specific he also projects designs.The output waters to be discharged from industrial wastewater treatment plants to the receiving environment,Filtration to be added to the end of the treatment plants depending on the sector, As a result of treatment with ultrafiltration and reverse osmosis groups, It can be reused in the production process.



DIFFUSERS AND BLOWERS

Diffusers used to meet the oxygen demand of wastewater in domestic and Industrial wastewater treatment plants are manufactured as disc and tube. Thanks to its membrane structures, it creates thin air bubbles and increases the oxygen transfer efficiency to the maximum extent. Both types of membrane diffusers, which are selected according to the size, shape and oxygen demand of the pool or tank to be ventilated, can reach a maximum air capacity of 12Nm3/h. Depending on the type of wastewater, diffusers can be supplied with EPDM or silicone membranes and can be easily installed thanks to a single connection .

Areas of Use :

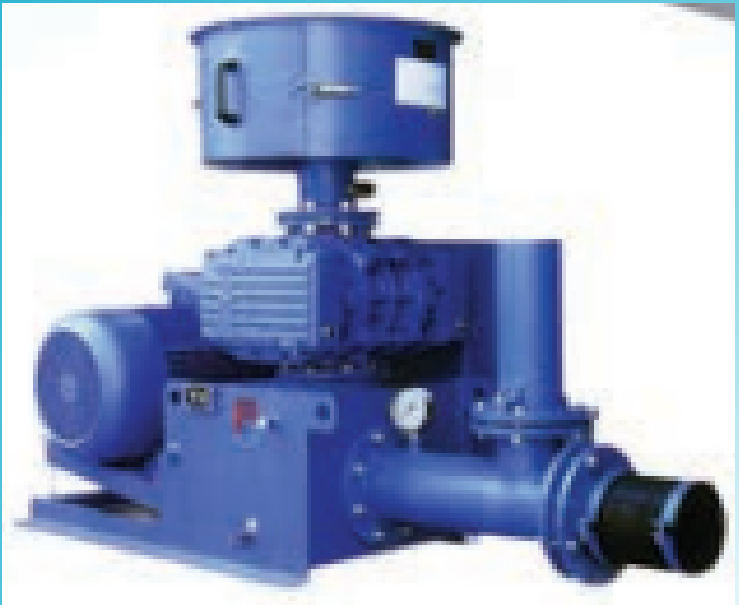
- * Domestic Wastewater Treatment Plants
- * Industrial Wastewater Treatment Plants
- * Package Wastewater Treatment Plants

The blowers have a very wide capacity December starting from 30Nm3/h and extending up to 2150NM3/h. Blowers the working pressure reaches up to 750 mbar in some models.

AREAS OF USE :

- WATER AND WASTEWATER TREATMENT
- * PACKAGING INDUSTRY
- * TEXTILE MACHINERY
- * IN-BUILDING PNEUMATIC COMMUNICATION SYSTEMS
- * METAL PLATING BATHS
- * DRYING OF BOTTLES AND PACKAGING
- FOOD, CEMENT AND PLASTIC INDUSTRY

- * CENTRAL VACUUM CLEANING
- PNEUMATIC CONVEYING APPLICATIONS
- * * JACUZZI
- * PVC COATING
- * FISH FARMS
- * FLOUR AND FEED SECTOR
- * PRINTING INDUSTRY
- SANDING
- * CERAMIC INDUSTRY
- * CHIP TRANSPORTATION ON MACHINE TOOLS



MEASURING AND DOSING SYSTEM

Motor driven pumps, as the name implies, are positive displacement pumps that operate based on the logic that a diaphragm moving back and forth with the help of an electric motor creates pressure and vacuum sequentially. In the case of solenoid type pumps, diaphragm movement, motor driven pumps on the contrary, It is provided not by an electric motor, but by an electromagnetic field created on a winding.

These pumps, which have material options that can be dosed many chemicals, Can also be supplied with all kinds of automation configurations, Including on - of, 4-20 mA signal and controlled.

Areas of use:

- * Water & Waste Water Treatment Plants
- * Chemical Industry
- * Petrochemical Industry
- * Industrial Facilities
- * Food Sector
- * Mining Sector
- * Energy Facilities
- * Textile Industry
- All other applications where precise dosing is important



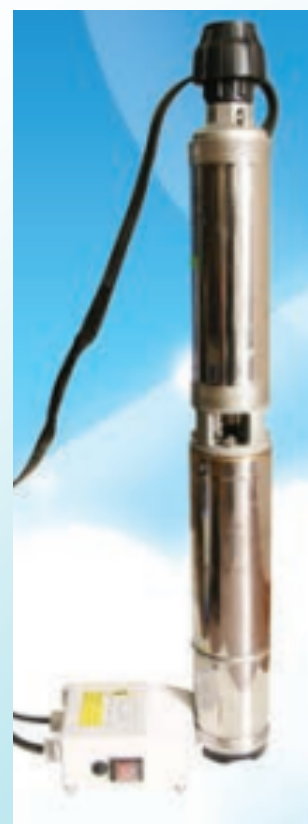
FLOW METERS AND MIXERS

Ultrasonic flow meters developed for flow measurement in open channels are ideal for very sensitive flow measurements in direct proportion to the measurement accuracy of 0-10 cm in open channels with a water level in the range of 0-3m . Electromagnetic flowmeters on the other hand, It can be used safely for precise flow measurement in fully filled flowing lines. Various material alternatives from electromagnetic flowmeter DN2 to DN 1200 it can be supplied with Jul.



BOOSTER AND PUMPS

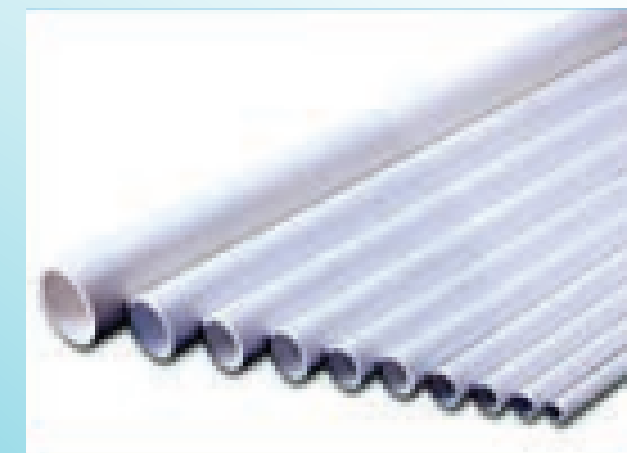
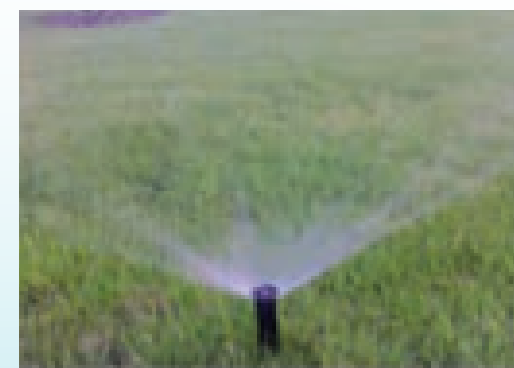
High pressure, quiet running, compact and low power consumption Boosters, Submersible Pumps, Sewage Pumps are selected according to the desired flow rate and used for your use it is presented.



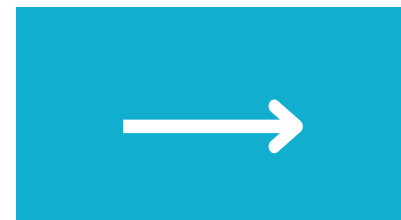
PLUMBING AND IRRIGATION SYSTEMS

In irrigation, full automatic control panel and POP-UP type underground spray springs are used to irrigate all of your green areas.

Our company has PVC - PPRC pipes and fittings in sizes from Q20 to Q200




STUDIES THAT WE HAVE DONE

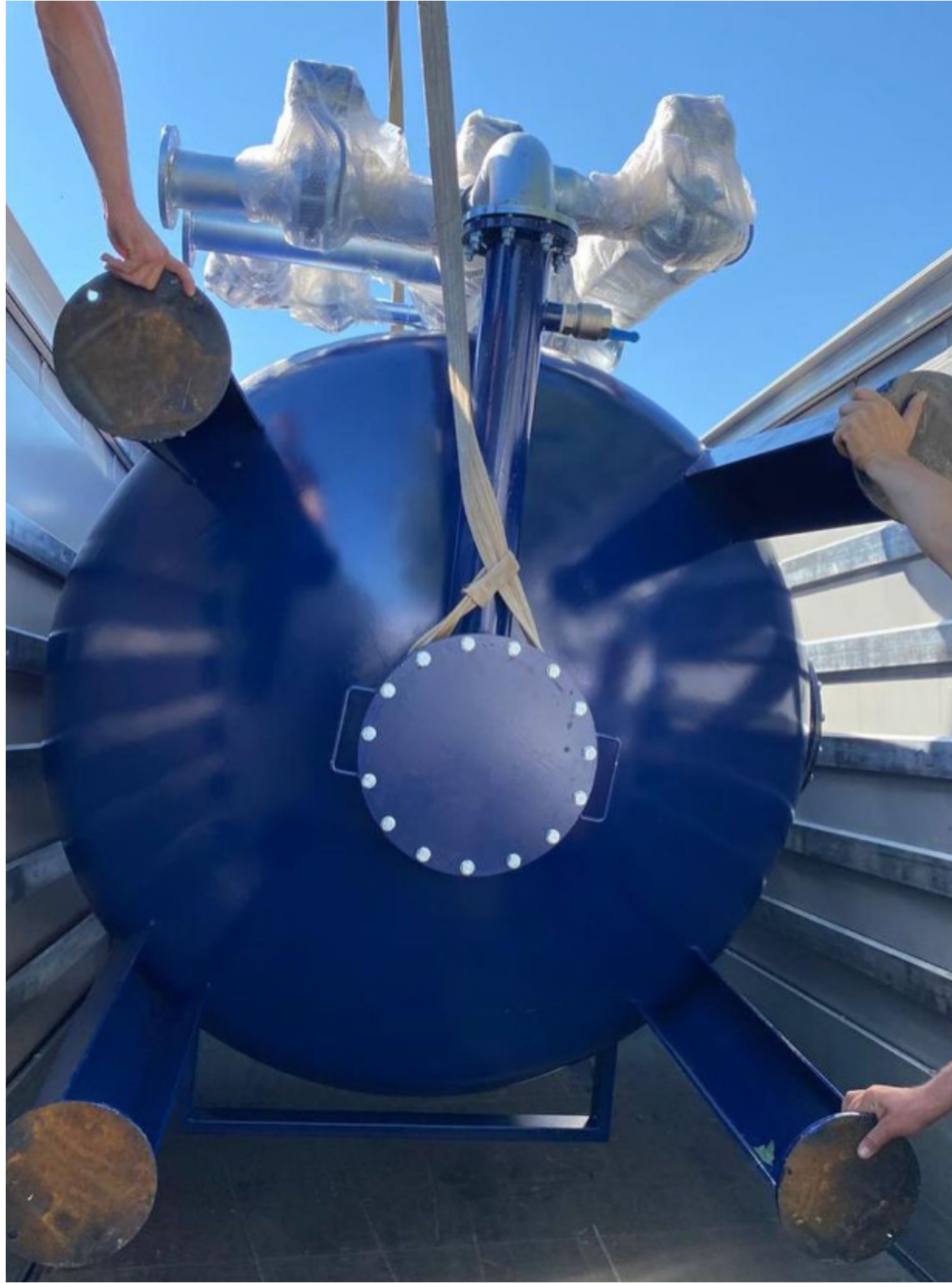








 AQUACELL® Su - Atıksu - Havuz - Arıtma Sistemleri			
Model	C-3220 YÜZEY BORULAMALI AKTİF KARBON FİLTASYON SİSTEMİ		
Kapasite	80 m³/saat	Seri No	PN02705
Tank Malzemesi	ST-37	Çalışma Basıncı (maks.)	6 bar
Tank Boyutları (cm)	D:322 HSİL:200 cm	Test Basıncı	9 bar
Voltaj	380 V / 50Hz	Su Giriş/Çıkış Hattı Bağlantısı	DN 150/6"















AKA OTOMOTİV SAN. A.Ş.
AKBAŞ HOLDİNG - GES GIDA ÇİFTLİK
ALİ BOSTANCI İNŞAAT SAN. VE TİC. LTD. ŞTİ.
ALKAM OTOMOTİV SAN. LTD. ŞTİ.
ASTAŞ ARIES İNŞAAT ADABAĞÇE-MEŞELİBAĞÇE PROJELERİ
ATIŞKAN TURİZM İŞL. VE YATIRIM A.Ş. (ESKİŞEHİR)
BATI DOKUMACILIK A.Ş.
BAYDUZ YEMEK SANAYİ TİC. LTD. ŞTİ.
BERŞAN TEKSTİL SAN.TİC. AŞ.
BİLECİK İL ÖZEL İDARE SU VE KANAL HİZMETLERİ
BİREL İNŞAAT / BİRİNCİ LIFE-SARAYLAR PROJESİ
BLUE TERRACE SİTESİ (AYVALIK)
BOLACALAR UN YEM YAĞ GIDA SAN. VE TİC. A.Ş.
BURSA ADALET SARAYI
BURSA BŞB NARLI SOSYAL TESİSİ
BURSA BŞB ZAFER PARKI
BURSA DUAÇINARI AĞIZ VE DİŞ SAĞLIĞI MERKEZİ

BURSA GENÇLİK HİZMETLERİ VE SPOR İL MÜDÜRLÜĞÜ
BURSA YENİŞEHİR DEVLET HASTANESİ
BURSA YENİŞEHİR HAVAALANI
C.P STANDART GIDA SAN. TİC. A.Ş
ÇANAKKALE İL ÖZEL İDARESİ SU VE KANAL HİZM. MÜD.
ÇEKİRGE DEVLET HASTANESİ
ÇELİKLER HOLDİNG (YSE YAPI SAN. VE TİC. A.Ş.)
DÖRTÇELİK ÇOCUK HASTANESİ
EMEK - SOĞANLI ÖĞRENCİ YURDU
ERALP KİMYASAL MADDELER SAN.VE TİC. LTD. ŞTİ.
ERGIDA A.Ş.
ERGÜL ŞEKERLEME SAN. TİC. LTD. ŞTİ.
ERMAKSAN MAK.SAN.TİC.AŞ.
ETS EZGİ TEKSTİL SAN.TİC.LTD.ŞTİ
GAZİYAŞAMKENT SİTESİ (İNEGÖL)

GAZİYAŞAMKENT SİTESİ (İNEGÖL)
GÜLDOĞAN MENSUCAT SAN. TİC. A.Ş
GÜLERYÜZ KAROSERİ VE OTO SAN.TİC.
GÜLÜMSER HATUN TERMAL TESİSLERİ (KÜTAHYA)
GÜMÜŞPINAR KÖYÜ (ORHANELİ)
GÜNBATILI BOYA KAŞAR APRE VE TEKSTİL SAN. A.Ş.
GÜNGÖR OTEL (YENİŞEHİR)
GÜRTİM PROJE UYGULAMALARI SAN.VE TİC.LTD.ŞTİ
İLKÇİZGİ ANAOKULLARI (NİLÜFERKÖY -DOBURCA)
İNEGÖL İSAÖREN-MEZİT GRUP KÖYLERİ
İTİMAT PEYNİRCİLİK SÜT VE SÜT ÜRÜNLERİ A.Ş.

REFERANSLARIMIZDAN BAZILARI..

SEÇKİN ONUR GIDA A.Ş.
SİMGE GRUP - E-MAK MAKİNA İNŞAAT TİC. VE SAN. A.Ş.
SOFRA YEMEK ÜRETİM VE HİZMET A.Ş
ŞAHİNCE OTOMOTİV SANAYİ VE TİCARET A.Ş.
ŞENER PEKMEZ HEL. REÇ. TAR. ÜR. GIDA SAN. VE LTD. ŞTİ.
ŞEVKET YILMAZ HASTANESİ
TAT GIDA SANAYİ A.Ş. (SEKSÜT-MOOVA GIDA)
UZMAN KATAFOREZ YÜZEY KAPLAMA SAN.TİC.LTD ŞTİ
YANKI İNŞAAT GIDA A.Ş.
YILMAR ÇELİK TEL YAY SAN. VE TİC. LTD. ŞTİ.
YÜKSELTUR KAZAN SAN.VE TİC.KOLL.ŞTİ
ZEKİ ZORLU MALİKANESİ

ORHAN KÖFTE
OSMANGAZİ BELEDİYESİ KANALBOYU PROJESİ
OTANTİK OTEL
OVATARIM HAYVAN ÜRÜNLERİ SAN. A.Ş.
ÖZEL SAFA EĞİTİM KOLEJİ
ÖZTAVUK GIDA TAR. HAYV.TİC. VE SAN.A.Ş.
PAK OTEL (GEMLİK)
REİSOĞLU İPLİK AŞ
REYYAN TEKSTİL SAN. VE TİC. LTD. ŞTİ.
RUDOLF DURANER KİMYEVİ MAD.TİC.SAN.A.Ş.
SA-KA İNŞAAT TAAH. SAN. VE TİC. LTD. ŞTİ. BALAT VİZYON
SAKARYA BÜYÜKŞEHİR BELEDİYESİ
SANABEL APARTMANI
SARIKÖY İÇME SUYU DERNEĞİ GÖNEN
SEÇKİN ONUR GIDA A.Ş.

İZNİK ÇİÇEKLİ - DRAZALI KÖYLERİ
KAFKAS PASTA ŞEKERLEME A.Ş.
KAR DOĞALSU KAYNAK NAK.SAN.TİC.AŞ
KARA SÜT İMALAT PAZ. SAN. TİC. A.Ş. (AYDIN)
KARACA KEBAP
KARACABEY İKİZCE KÖYÜ
KARINNA OTEL ULUDAĞ
KEBAPÇI İSKENDER (SUSURLUK - KORUPARK)
KERVANSARAY (BURSA-TERMAL-ULUDAĞ OTELLERİ)
KESTEL BELEDİYESİ KENT MEYDANI PROJESİ
KIRATLI İNŞAAT SİDELYA GARDEN 1-2-3
KIRCALI YAPI İNŞAAT A.Ş. -İNEGÖL AVM
KREDİ YURTLAR KURUMU ORHANGAZİ VE ULUDAĞ YURDU
MARMARA ZEYTİN TARIM SATIŞ KOOPERATİFLERİ BİRLİĞİ
MARTAŞ GIDA VE YEMEK SAN. A.Ş.
MARTUR SÜNGER VE KOLTUK TESİSLERİ TİC. VE SAN. A.Ş
MİNTEKS TEKSTİL SAN. VE TİC. LTD. ŞTİ.



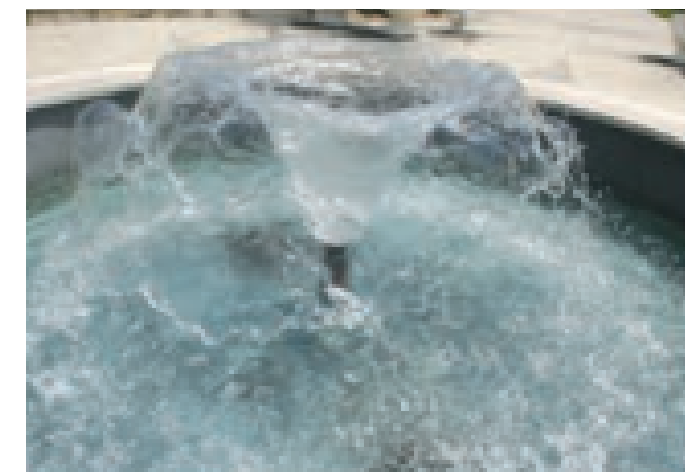
SWIMMING POOLS

Swimming is an activity that refreshes a person at the end of a long and tiring day, reduces fatigue, stress and gives great pleasure to a person. It is a special way of life. Your pool is the place where you can have beautiful moments with your loved ones. Mefa Treatment offers quality, economical, reliable equipment and chemicals to your pool.

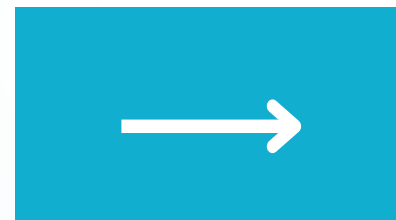


ORNAMENTAL POOLS

The fountain-lighting systems and stainless collectors needed in the construction of an ornamental pool are designed according to the desired image and presented to your liking.



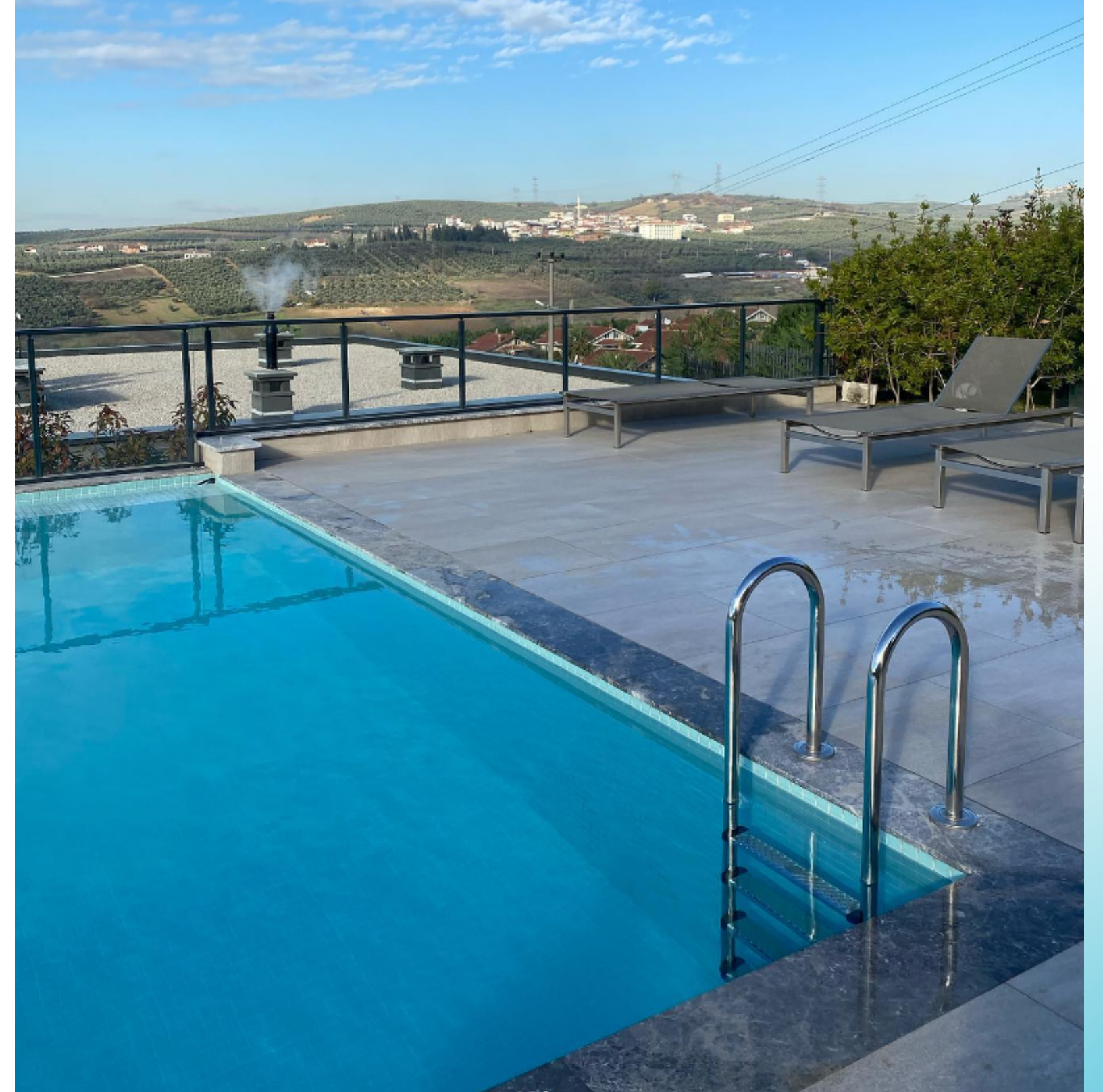
STUDIES THAT WE HAVE DONE



KÜTAHYA GÜLÜMSER HATUN TERMAL



PARK BADEMLİ VİLLALARI



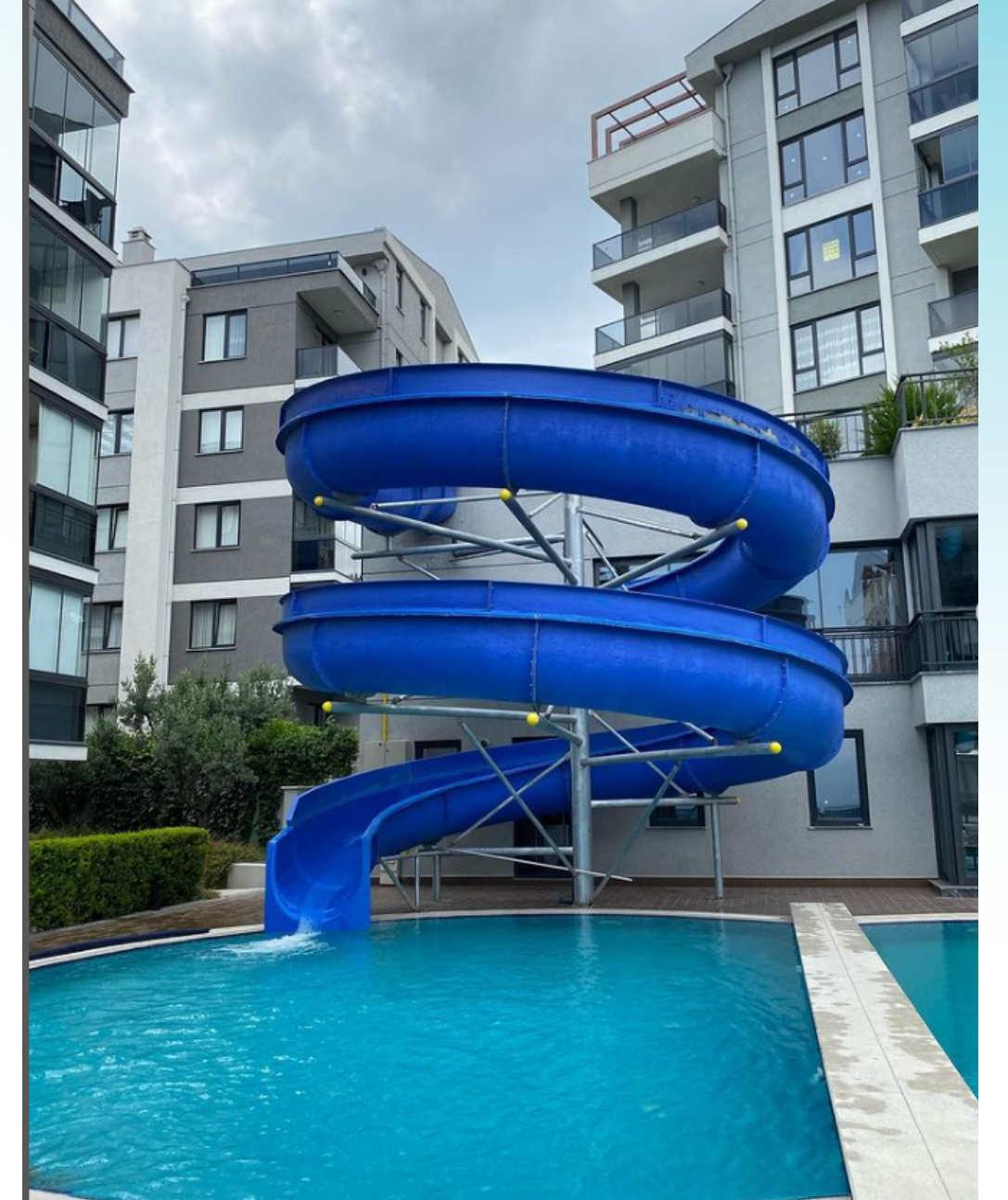
ÇAĞRIŞAN ÖZEL HAVUZ



PANULA BALAT



MUDANYA SİTE HAVUZU



YÖNDER OKULLARI







PEBBLE KAPLAMA

DEVAM EDEN ÇALIŞMALARIMIZ

